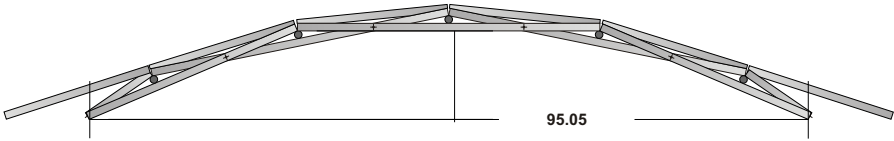
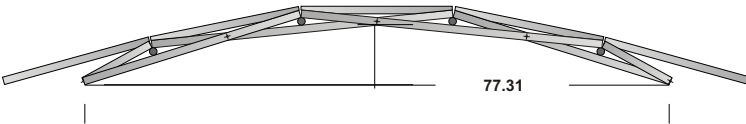


5.74907°

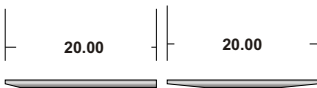


11.70



7.94

Considerations:



1.00

10.05

- o Logs should be peeled.
- o Fasteners need not carry any appreciable load.
- o Fasteners must keep components in line.
- o Arch piece ends should butt together nicely at the bottom
- o Try to keep from allowing a twist in the arch assembly
- o Arches must be on a vertical plane.
- o Pairs of arches should be erected symmetrically
- o If logs are appreciably tapered, consider matching end diameters and inserting the thin or thick end of a cross beam to average out the geometry.
- o Load should be carried by the arch peaks for maximum efficiency.
- o Putting loads directly on the arch crossings is not recommended.
- o When erecting the arches, try for a good fit of the cross beam in the arch peak. Tie arch piece crossings together where they happen to touch. If possible, tie the crossings loosely and fix them well after the arch is standing in footings.
- o Shorten the span so there is little, if any, sag in the individual components
- o Try to cover the arch peaks with a deck plank, to keep debris from collecting in the wedge, which may become a damp, attractive home for bugs.

Angle	5.74907
Log Diameter	1
Length 1	10.0510
Length 2	19.8980
Length 3	40.0000